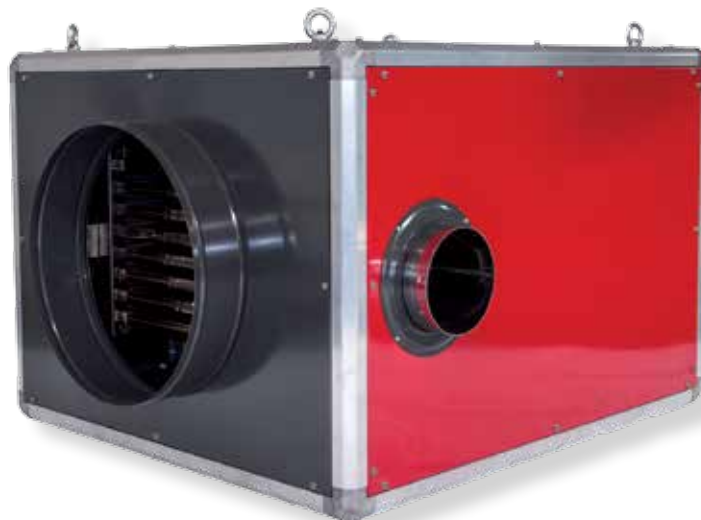


FUEL TYPE



ISA 65



Chimney connection ISA 65.



Standard equipped with suspension hooks.



Switch box ISA 65.



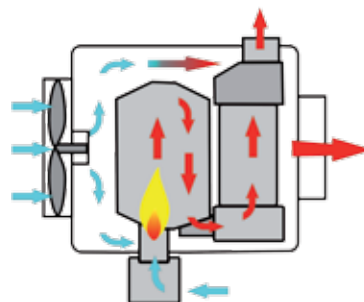
ISA 65 burner and switchbox with optional fan speed control.

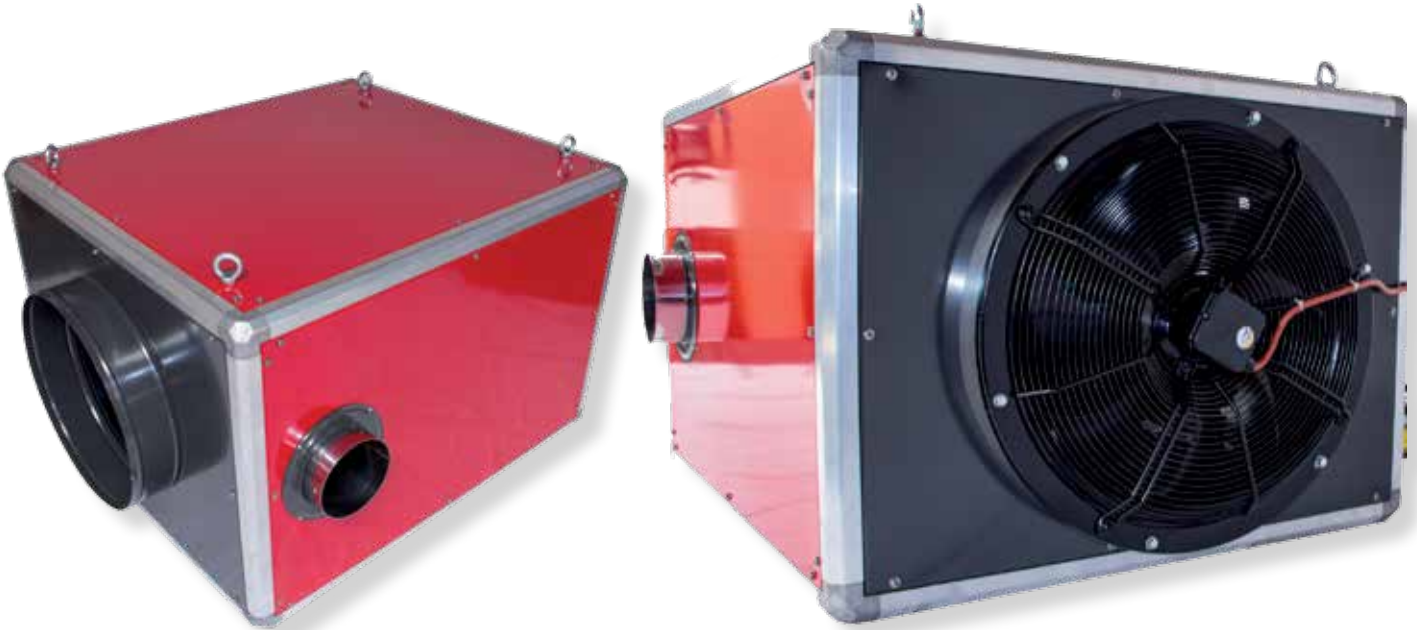
## WORKING PRINCIPLE

- 100% Clean and dry heat.
- Outlet temperature  $\Delta T$  35 °C.\*
- Large air throw.
- High efficiency heat exchanger (92%).
- Combustion chamber heat resistant up to 850 °C.

## FEATURES

- With overheating protection and temperature limitation of warm air.
- The fan stops at temperatures below 40 °C and does not ventilate cold air when starting up.
- Fully automatic, controllable with thermostat connection.
- Tigerloop standard, fuel filter with condensate separator.
- Can be used in combination with Multitanks or other fuel tanks.
- Intercal industrial burner with flowcontrol.
- As alternative available with a Riello oil- or gas burner.
- Room ventilation is required, fresh air connection available.
- Fan speed control is optionally available.





## APPLICATIONS

- Industry** • Heating of transit sheds and workshops.
- Marquees heating** • Heating of marquees, showrooms and sports halls.
- Agriculture** • Heating of sheds and storage areas.
- Horticulture** • Heating of greenhouses and polytunnels without the risk of harmful CO<sub>2</sub> and CO emission.

## TECHNICAL SPECIFICATIONS | DIMENSIONS AND WEIGHTS

1 kW = 860 kcal/h 1 kW = 3,413 Btu/h 1 kW = 3.6 MJ/h 1 kg = 1.2 l/h

MODEL	Heat output (Btu/hr)	Capaciteit (kW)	Fuel consumption oil max. (l/hr)	Heated air flow (m <sup>3</sup> /hr)	Max. ventilator back pressure (Pa)	Power consumption (AMPS)	Outlet cone Ø (mm)	Flue connection Ø (mm)	Thermostat connection	ITEM NUMBER
ISA 65 AX	222,000	65	6.3	6	200	4/230 V	500	180	Yes	41.526.100

MODEL	Dimensions heater only (cm)						KG	Dimensions including packing (cm)			
	A	B	C	D	E	F		L	B	H	KG
ISA 65 AX	140	134	81	-	-	-	195	154	148	99	285

