

# ACCESSORIES



RT1, RT2, RT3



IT1



DA1



Thermostat for CH 12/18.



Digital timer, burning and ventilating.



Fault detector GSM.



GSM temperature fault detector.

## THERMOSTATS

RT1, room thermostat -10/+40 °C with 5 m cable and plug, IP 54, switching differential ± 2 degrees.
RT2, as RT1, with 10 m cable IP 54.
RT3, as RT1, with 20 m cable IP 54.
IT1, duct thermostat 0/100 °C with 6 m cable and plug, switching differential ± 1.5%. For control of temperature in ducting system.
DA1, dual connection for thermostat. For control of 2 heaters on 1 thermostat.
Thermostat for CH 12/18
Extension cable 10 m for thermostat, with plug.
Thermostat plug.
Chassis piece for thermostat plug.
Fault detector GSM IMA.
Fault detector GSM IMAC.
Fault detector GSM room temperature monitoring, no connections needed. Regardless of the type of heater.

	TA	TAS	ITA	IMA	IMAC	GA	AGA	Pro/teat	CH 12/18	ITEM NUMBER
	*	*	*	*	*	*	*	*		40.228.405
	*	*	*	*	*	*	*	*		40.228.410
	*	*	*	*	*	*	*	*		40.228.420
	*	*	*	*	*	*	*	*		40.000.107
	*	*	*	*	*	*	*	*		41.729.220
									*	40.107.098
	*	*	*	*	*	*	*	*		40.202.140
										40.000.031
	*	*	*	*	*	*	*	*		40.202.087
				*						41.722.720
					*					41.729.540
	*	*	*	*	*	*	*	*		40.223.400

## SWITCHING / ELECTRONICS

Transformer set for electrical connections without 0
Transformer set for electrical connections without 0
Soft-starter set for gradual run-in of fan
Earth leakage switch
Hour counter
Digital timer, burning and ventilating
VFD fan speed controller (only factory option)

	IMA 61	IMA 111	IMA 150	IMA 200	IMAC 2000 S	IMA 61/111/150 AXIAL	ISA 65	ITEM NUMBER
		*	*	*				41.728.190
					*			41.729.250
		*	*	*				41.728.203
					*			41.729.094
	*	*	*	*		*	*	41.728.235
	*	*	*	*				41.728.302
		*	*	*				41.724.930



Set of air wheels.

## TRANSPORT AND STORAGE

Set of air wheels for synthetic tank
Set of air wheels with axle parts
Set of air wheels with axle parts + base
Set of air wheels
Set of air wheels
Set of air wheels with axle parts
Various transport frames

	TA 16/22/30	TA 40	TA 60	ITA 30/35	ITA 45	ITA 75	IMA Serie	ITEM NUMBER
	*							40.223.195
		*	*					40.404.220
				*				41.300.053
					*			40.404.300
						*		40.404.400
							*	41.722.237
							*	ON DEMAND

	GA 60 E	GA 85 E	GA 110 E							ITEM NUMBER
Set of standard wheels with axle + base	*	*								40.707.094
Set of standard wheels with axle + base			*							40.710.124



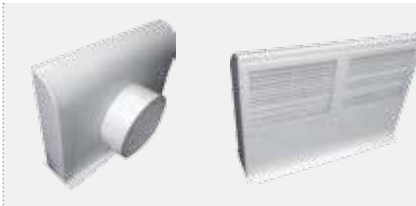
Distribution head for ITA.



For IMA models.



For IMAC models.



Air distributor.

**WARM AIR TRANSPORT AND ANCILLARIES**

**DISTRIBUTION HEADS FOR ITA**

To be connected to outlet cone of heater including 1 quick release clamp and 2 hose clips

Air distributor

	ITA 30/35	ITA 45	ITA 75							ITEM NUMBER
OUTLET OPENINGS										
2x200 mm	*									41.300.125
2x300 mm		*	*							41.404.153
400 mm		*	*							50.500.450

**DISTRIBUTION HEADS FOR IMA**

To be fixed instead of standard outlet panel (ex works, if necessary), excluding clamps

Air distributor

Connection piece 300 to 400 mm for air distributor

Connection piece 150 to 400 mm for air distributor

	IMA 61	IMA 111	IMA 150	IMA 200	IMAC	ITA				ITEM NUMBER
OUTLET OPENINGS										
2x300 mm	*									41.722.068
4x300 mm		*	*							41.724.177
2x360 mm		*	*							41.724.192
4x300 mm				*						41.728.177
2x400 mm				*						41.728.443
2x500 mm				*						41.728.068
400 mm	*	*	*		*	*				50.500.450
	To connect hoses 300 mm to the air distributor (400 mm)									50.500.475
	To connect hoses 150 mm to the air distributor (400 mm)									50.500.465

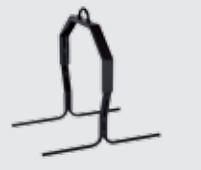
**DISTRIBUTION HEADS FOR IMAC**

	IMAC 2000 S	IMAC 4000 E								ITEM NUMBER
OUTLET OPENINGS										
1x500 mm	*									41.729.804
2x500 mm	*									41.729.997
4x300 mm	*									41.729.820
6x300 mm	*									41.729.862
1x800 mm		*								41.740.565
2x600 mm		*								41.740.560
3x500 mm		*								41.740.050

# ACCESSOIRES



ITA Connection piece.



Lifting bracket set.

## CONNECTION PIECES FOR ITA

To be connected to outlet cone of heater to protect hose from too high temperatures incl. 2 quick release clamps.

Lifting bracket set ITA 45 Robust

Lifting bracket set ITA 75 Robust

OUTLET OPENINGS	ITA 30/35	ITA 45	ITA 75	ITA 45 ROBUST	ITA 75 ROBUST	ITEM NUMBER
Ø 300 mm	*					99.084.041
Ø 400 mm		*	*			41.404.152
				*		41.450.002
					*	41.751.002



Glass fibre with neoprene coating, -40/+140 °C.



Polyamide with pvc-coating, -30/+100 °C.

ATTENTION: Hoses produce BACK PRESSURE which can cause the heater to switch off. Avoid too LONG and/or too NARROW hoses and too many BENDS. Heaters with RADIAL fans are especially suited.

## WARM AIR TRANSPORT HOSES

Temperature resistant -40/+140 °C grey

LENGTH 5 m	VTB 3000	VTB 9000	VTB 15000/18000	ITA 30/35, CH 12/18	Distrib. head ITA 45/75	ITA 45/75	IMA 200	IMAC 2000 / IMAC 4000	ITEM NUMBER
Ø 150 mm			*						40.107.071
Ø 300 mm				*	*				40.107.077
Ø 400 mm						*			40.107.079
Ø 500 mm							*		40.107.080
Ø 600 mm								*	40.107.081
Ø 100 mm	*								40.107.270
Ø 120 mm		*							40.107.275

## WARM AIR TRANSPORT HOSES

Temperature resistant -30/+100 °C yellow

LENGTH 6 m	ITA 30/35	ITA 45/75	Distrib. head IMA 61/111/150/200	ISA 65	Distrib. head ITA 30/35	Distrib. head 45/75	Distrib. head IMA 111/150	IMA 61	IMA 111/150 Distrib. head IMA 200	IMA 200 / IMAC 2000 S	Distrib. head IMAC 2000 S	IMAC 4000 E depending on outlet diam.	ITEM NUMBER
Ø 200 mm				*									40.107.273
Ø 300 mm	*		*		*								40.107.276
Ø 365 mm						*							40.107.278
Ø 400 mm		*						*					40.107.280
Ø 500 mm			*					*	*	*	*	*	40.107.282
Ø 600 mm									*	*	*	*	40.107.284
Ø 800 mm											*	*	40.107.286

On request warm air transport hoses temperature resistant -40/+80 °C and warm air transport hoses in other colours are available.



Connection pieces for hose with sleeve.



Rubber quick release clamps.



Various reducing and coupling pieces.



Steel quick release clamps.



Hose clips.

### CONNECTION PIECE FOR HOSES WITH SLEEVE

To connect hoses, including 2 hose clips.

### CONNECTION PIECE

### ITEM NUMBER

Ø 300 mm  
Ø 400 mm

41.218.071  
41.404.154

### RUBBER QUICK RELEASE CLAMPS FOR HOSES WITH END RING

To connect hoses and if desired to fix to the heater flange.

### HOSE

Ø 200 mm  
Ø 300 mm  
Ø 365 mm  
Ø 400 mm  
Ø 500 mm  
Ø 600 mm  
Ø 800 mm

40.502.065  
40.502.067  
40.502.068  
40.502.069  
40.502.071  
40.502.073  
40.502.075

### GALVANIZED HOSE CLIPS

To fasten hoses to the heater flange or to a connection piece.

Ø 100-102 mm  
Ø 130-165 mm  
Ø 60-600 mm

40.509.158  
40.502.251  
41.522.196

### STEEL QUICK RELEASE CLAMPS

Specially suited to fasten hoses to ITA models.

Ø 305 mm  
Ø 400 mm

41.200.051  
41.404.117



"Easy connect" recirculation flange.



Recirculation hoses.

### RECIRCULATION FLANGES

Recirculation flange with bayonet connection for models from production year 2008 and up

### HOSE

Ø 300 mm  
Ø 400 mm  
Ø 500 mm  
Ø 600 mm

IMA 61

IMA 111

IMA 150/200

IMAC 2000 S

### ITEM NUMBER

41.722.140  
41.724.425  
41.728.445  
41.729.878

Recirculation set for models up to production year 2008

Ø 400 mm  
Ø 400 mm  
Ø 500 mm

\*

\*

\*

\*

41.722.120  
41.724.008  
41.728.008

### RECIRCULATION HOSES Ø 400 mm

### LENGTH

5 m  
10 m

IMA 111

IMA 150/200

IMAC 2000 S

IMAC 4000 E

\*

\*

\*

\*

\*

\*

### ITEM NUMBER

41.729.223  
41.729.224  
41.729.228  
41.729.246  
41.729.241  
41.729.242

# ACCESSOIRES



45 degrees bend for hose connection on marquees.

## HOSE CONNECTION BEND 45 DEGREES

To connect hoses to marquees.

DIAMETER

Ø 300 mm

Ø 400 mm

Ø 500 mm

ITA 30/35

IMA 61 / ITA 45/75

IMA 111/150

IMAC 2000 / 2200 distr. head 300

IMAC 2000 / 2200 distr. head 500

IMAC 4000 distr. head 500

ITEM NUMBER

41.000.300

41.000.400

41.000.500



Fresh air connection flanges.



Fresh air suction hoses.



Wall connector.

## SUCTION OF FRESH AIR

FRESH AIR SUCTION HOSES 5 m

For suction of clean fresh air

DIAMETER

Ø 102 mm

AGA 45/75/102/111 E

GA 60/85/110 E

TAS 800 E

ITEM NUMBER

41.000.585

## STAINLESS STEEL WALL CONNECTOR WITH RAINCAP

Prevents raining in and back pressure

DIAMETER

Ø 100 mm

TAS 800 E

GA 60/85/110 E

AGA 45/75/102/111 E

ITEM NUMBER

40.721.016

## FRESH AIR SUCTION FLANGES

Suction flange for oil burner SL 22

Suction flange for oil burner SL 44/55

IMA 61

IMA 111

IMA 150

IMA 200

IMAC 2000 S

ITEM NUMBER

99.095.025

99.095.026



Pipes.



Rain caps.



Bushing set for flue.



Chimney clamp ITA 35/45/75.

## FLUE STACKS

	Ø (mm)	ITA 30/35	ITA 45	ITA 75	IMA 61 / ISA 65	IMA 111/150/200	IMAC 2000 S	IMAC 4000 E	AT 3XX/400	AT 500	ITEM NUMBER
Galvanized pipes 1 meter	Ø 150 mm	*	*						*		41.000.562
	Ø 180 mm			*	*						41.522.172
	Ø 200 mm					*	*			*	41.528.192
	Ø 300 mm							*			41.740.665
Galvanized rain caps	Ø 150 mm	*	*						*		41.000.565
	Ø 180 mm			*							41.522.175
	Ø 200 mm					*	*			*	41.528.187
	Ø 300 mm							*			41.740.666
Galvanized bends 45°	Ø 150 mm	*							*		41.000.561
	Ø 180 mm		*	*	*						41.522.171
	Ø 200 mm					*	*				41.528.230
	Ø 300 mm							*			41.740.667
Bushing set for flue in polytunnels	Ø 150 mm	*							*		41.652.250
	Ø 180 mm		*	*	*						41.750.250
	Ø 200 mm					*	*				41.528.181
Chimney clamp set ITA 35/45		*								41.404.099	
Chimney clamp set ITA 75			*							41.750.099	



Connection set for gas bottles.

## Connection set for gas bottles

	GA	ITEM NUMBER
Connection set for gas bottles, to increase evaporating capacity	*	40.700.054

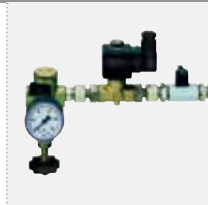
# ACCESSOIRES



Connection set for connecting several Multitanks.  
Conversion kit.



Oil supply unit.



Connection/reduction set.

## Fuel accessories

Conversion kit from 1-way to 2-way pipe system, for suction from bulk tank, maximum length 50 m/height 3 m (depends on diameter of pipe). To be mounted on fuel pump.

Oil supply unit DE 600, 60 litre to transport oil under pressure from bulk tank to one or more heaters, to maximum height of 30 m.

Needed per heater: connection/reduction set with magnetic valve

Oil preheating with cable (voor SL 22)

Oil preheating with cable (voor SL 44/SL 55)

Oil filter with water separation and bracket for return pipe

Oil filter with water separation, interchangeable with current filter

Oil filter set with preheating

Oil suction set universal

	T	TA	ITA	IMA 61	IMA 111/150/200 / IMAC 200/400	TAS 800	ITEM NUMBER
Conversion kit from 1-way to 2-way pipe system, for suction from bulk tank, maximum length 50 m/height 3 m (depends on diameter of pipe). To be mounted on fuel pump.	*	*	*				41.402.114
Oil supply unit DE 600, 60 litre to transport oil under pressure from bulk tank to one or more heaters, to maximum height of 30 m.	*	*	*	*	*	*	41.530.005
Needed per heater: connection/reduction set with magnetic valve	*	*	*	*	*	*	41.522.213
Oil preheating with cable (voor SL 22)							41.527.212
Oil preheating with cable (voor SL 44/SL 55)							41.527.211
Oil filter with water separation and bracket for return pipe				*			41.722.230
Oil filter with water separation, interchangeable with current filter						*	40.467.052
Oil filter set with preheating				*	*		41.722.370
Oil suction set universal				*	*		41.520.104



Measuring tools.

## SERVICE TESTING EQUIPMENT

Pressure gauge 0-25 bar 1/8" BSP

Pressure gauge 0-25 bar 1/4" BSP, glycerine filled

Valve 1/8" outer X 1/4" inner

Pressure gauge 0-0.6 bar

Soot pump, complete with paper and lubricant

Testing paper for soot pump

Filling liquid for CO2-meter

Interrest for oil heaters with SATRONIC burner relays UP 940

Testing unit for oil heaters with SATRONIC oil burner relays UP 711

Testing unit for oil heaters with SATRONIC gas burner relays UP 712

Smoegas thermometer

Spray can with paint, colour red, content 400 ml

Spray can with paint, colour anthracite, content 400 ml

## ITEM NUMBER

40.000.185

40.000.332

40.000.349

40.225.146

40.000.190

40.000.189

40.000.191

40.223.102

40.223.101

40.000.330

40.000.192

60.530.075

60.530.077

## RECIRCULATION FANS TTV



### FEATURES

- Easily portable.
- Easily stackable.
- Shock proof synthetic fan housing.
- Double-sided grille according to CE-standard.
- Isolation class F, IP 65.
- With cable and plug.
- Adjustable support.
- Protected 3-step control regulator.

### OPTIONS

- Hose connection piece to be used on either side.

### APPLICATIONS

Especially developed for use under very severe conditions in the building industry and rental business.

## DOWNFLOW FANS SDS



### FEATURES

- Heat recovery by re-circulating high level warm air back to occupancy level.
- Reduced fuel bills by eliminating excess heat loss through the roof.
- Improved comfort level for occupants.
- Durable phosphated body panels with powder coating.
- Four eye bolt suspension points are provided.
- Ready for automatic operation with installations only requiring mounting and connection of a single phase electrical supply to a ground level isolation switch.
- Each fan is fitted with an integral thermostat switching on at temperature rise.
- Available in three sizes with mounting heights from 5 m to 10 m and air volumes from 3,800 m<sup>3</sup>/hr to 10,800 m<sup>3</sup>/hr.

### APPLICATION

The SDS de-stratification fans are purpose designed to provide a permanent reduction in roof space temperature in high buildings such as factories, warehouses and sports centres.

## TECHNICAL SPECIFICATIONS | DIMENSIONS AND WEIGHTS

MODEL	Power (W)	Ø (mm)	RPM	Airflow (m <sup>3</sup> /hr)	Power consumption 250 V/50 Hz (AMPS)	Air throw (m)	Noise level (dB(A))	Number of fans	Max. mounting height (m)	Length (mm)	Width (mm)	Height (mm)	Weight (kg)	ITEM NUMBER
TTV 4500	230	420	1,400	4,500	1.1	45	60	1	-	-	-	-	-	50.500.210
TTV 7000	390	518	1,400	7,000	1.8	55	64	1	-	-	-	-	-	50.500.220
SDS 4	320	-	900	3,800	-	-	41	1	5	688	650	400	18	50.500.400
SDS 6	350	-	900	5,800	-	-	48	1	7	600	650	400	21	50.500.410
SDS 10	700	-	900	10,800	-	-	51	2	10	650	1,200	400	36	50.500.420

OPTIONS	TTV 4500	TTV 7000	ITEM NUMBER
Hose connection piece 450 mm	*		50.500.211
Hose connection piece 550 mm		*	50.500.221
Hose 450 mm, L=7.6 m	*		50.500.212
Hose 550 mm, L=7.6 m		*	50.500.222